



# GAT MONTHLY MEMBERSHIP PROGRESS REPORT

Results as of: 8/31/2021

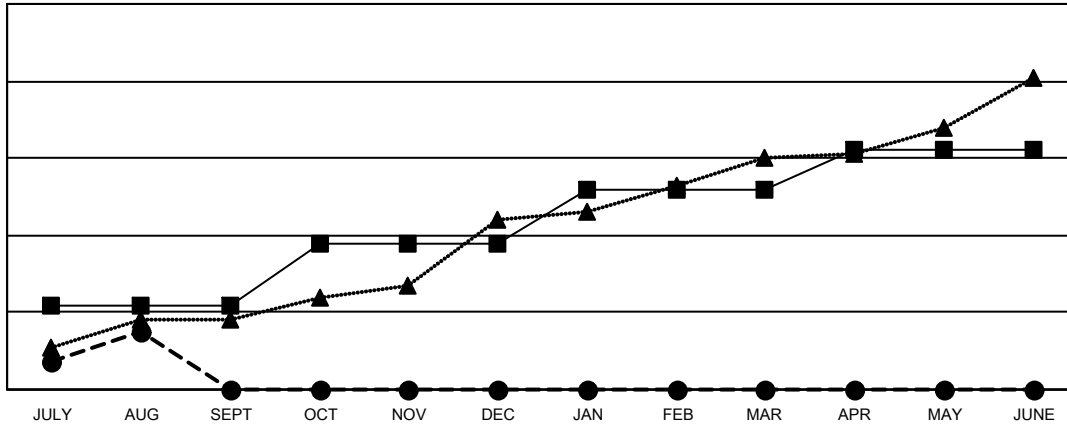
Multiple District 3233

LOCATION: INDIA

| Clubs                 |               |           |               |
|-----------------------|---------------|-----------|---------------|
| RESULTS FOR 2021-2022 |               |           |               |
| QUARTER               | NEW CLUB GOAL | NEW CLUBS | DROPPED CLUBS |
| JULY/AUG/SEPT         | 22            | 15        | 44            |
| OCT/NOV/DEC           | 16            | 0         | 0             |
| JAN/FEB/MAR           | 14            | 0         | 0             |
| APR/MAY/JUNE          | 10            | 0         | 0             |

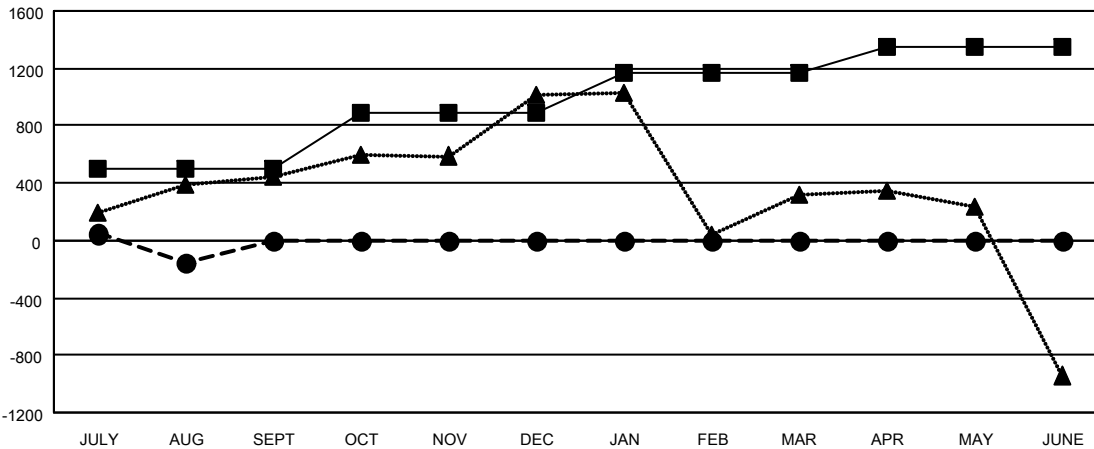
| Members               |                        |                      |  |
|-----------------------|------------------------|----------------------|--|
| RESULTS FOR 2021-2022 |                        |                      |  |
| QUARTER               | MEMBER GROWTH NET GOAL | MEMBER GROWTH ACTUAL | DROPPED MEMBERS ACTUAL (including transfers) |
| JULY/AUG/SEPT         | 495                    | 788                  | 872  |
| OCT/NOV/DEC           | 395                    | 0                    | 0  |
| JAN/FEB/MAR           | 280                    | 0                    | 0  |
| APR/MAY/JUNE          | 180                    | 0                    | 0  |

GOALS AND ACTUAL NEW CLUBS CUMULATIVE



- - CURRENT YEAR GOALS FOR NEW CLUBS
- - CURRENT YEAR ACTUAL NEW CLUBS
- ▲ - LAST YEAR ACTUAL NEW CLUBS

GOALS AND ACTUAL MEMBERS CUMULATIVE



- - MEMBER GROWTH NET GOAL
- - MEMBER GROWTH ACTUAL
- ▲ - LAST YEAR MEMBERSHIP ACTUAL

|                        |   |                                       |
|------------------------|---|---------------------------------------|
| DROPPED CLUBS: 44      | 130 CLUBS OF 842 ADDED 1 OR MORE NEW MEMBERS              | <b>GENDER DISTRIBUTION</b>            |
| <b>DROPPED MEMBERS</b> | <a href="#">CLICK HERE FOR CUMULATIVE MEMBERSHIP DATA</a> | MALE 13,182 (67.41%)                  |
| DECEASED 12            |   | FEMALE 6,373 (32.59%)                 |
| CLUB CANCELLED 448     |   | NON BINARY 0 (0.00%)                  |
| OTHER 412              |   | PREFER NOT TO ANSWER 0 (0.00%)        |
| <b>TOTAL 872</b>       |   | TOTAL FAMILY UNIT MEMBERS 7,734       |
|                        |   | FAMILY MEMBERS PAYING HALF DUES 4,418 |